

Regional Setting

TOWN OF DEERFIELD

 Town Boundaries

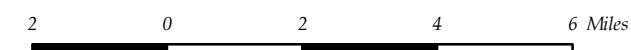
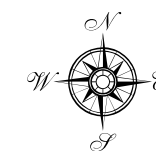
 Lakes

Roads

 Limited Access

 Highway

 Major Road



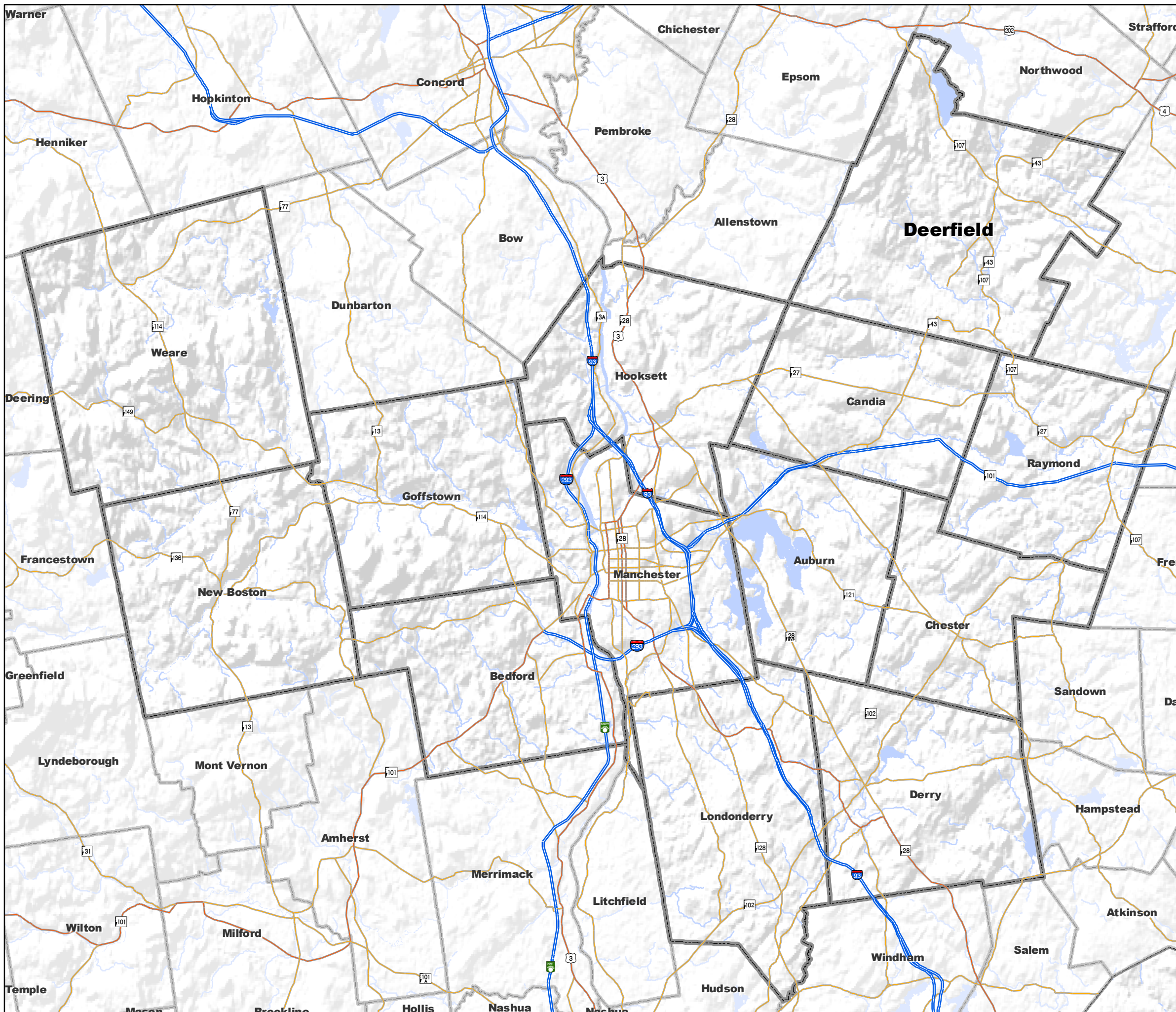
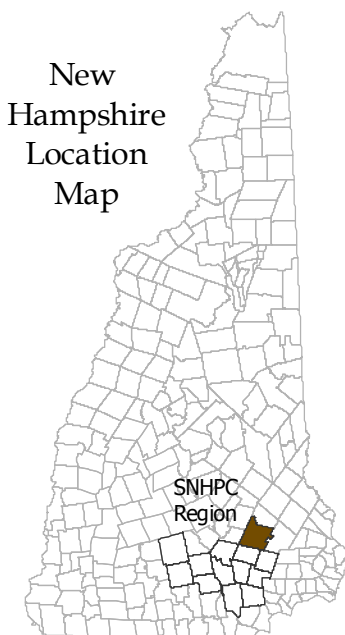
Data Sources:
NH GRANIT Digital Data (1:24,000)
NH Department of Transportation
Town of Deerfield
SNHPC

The individual municipalities represented on this map and the SNHPC make no representations or guaranties to the accuracy of the features and designations of this map.

Map Produced by
GIS Service SNHPC 2007.
Contact: gis@snhpc.org
Ph: (603) 669-4664





This map is one of a series of maps that were produced as part of a Town's Master Plan 2007 and for planning purposes only. It is not to be used for legal boundary determinations or for regulatory purposes.

New Hampshire
Location
Map




Existing Zoning

TOWN OF DEERFIELD

-  Town Boundaries
-  Conservation Land
- Road Classes**
-  State Maintained Roads
-  Town, Local, and Private Roads

Zoning

-  Agricultural/Residential:
33347.66 acres, 100%

Zoning Overlays

-  100 Year Floodplain Overlay:
2402.21 acres, 7.2%

-  Senior Housing Overlay:
33347.66 acres, 100%

-  Commercial Overlay:
33347.66 acres, 100%

Total Acreage, Existing Zoning = 33347.66

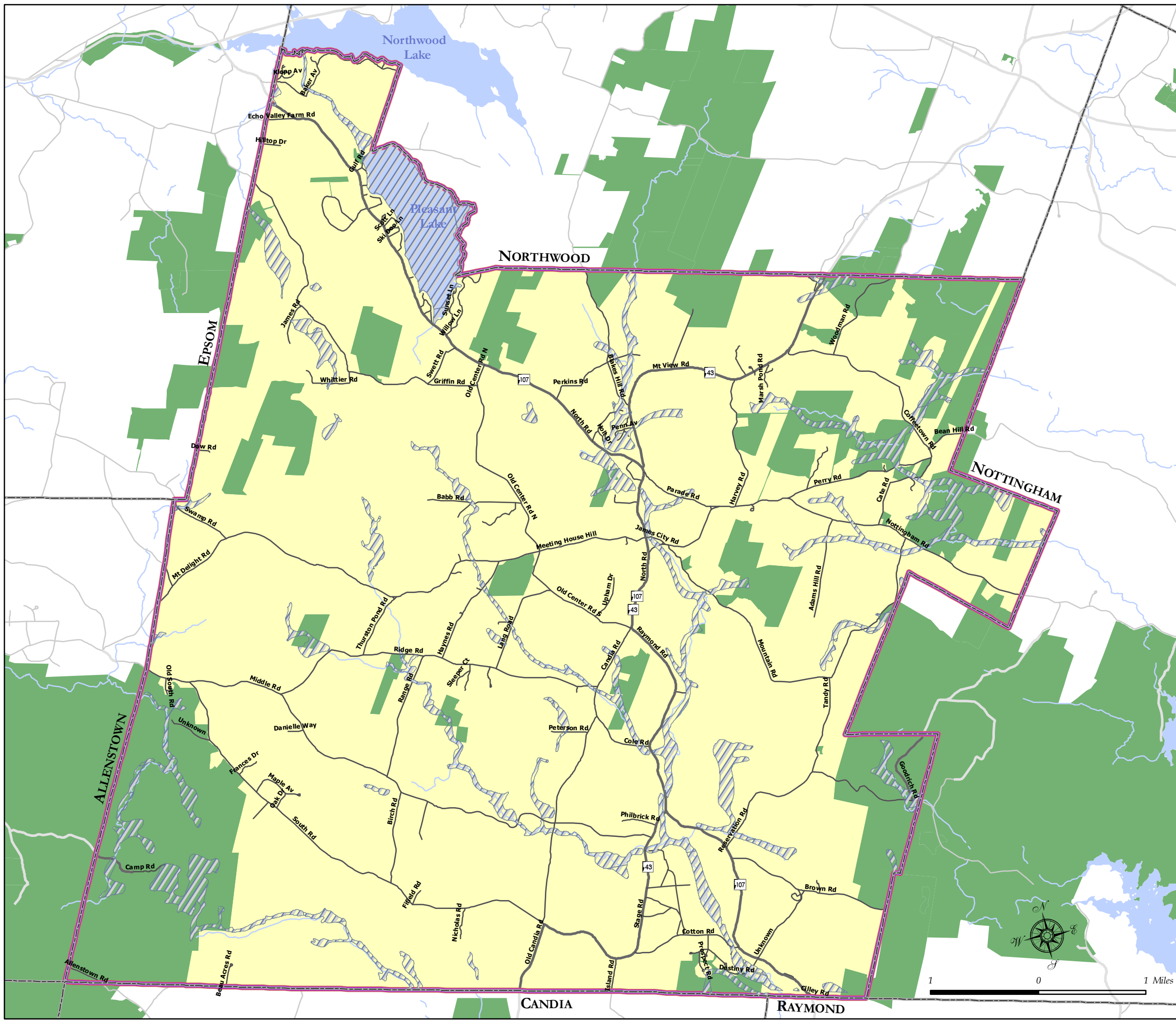
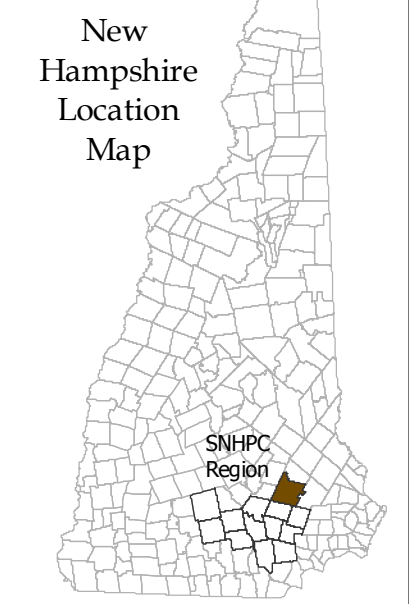
*Overlay percentages are a percentage of the existing zoning total acreage

Data Sources:
NH GRANIT Digital Data (1:24,000)
NH Department of Transportation
Town of Deerfield
SNHPC

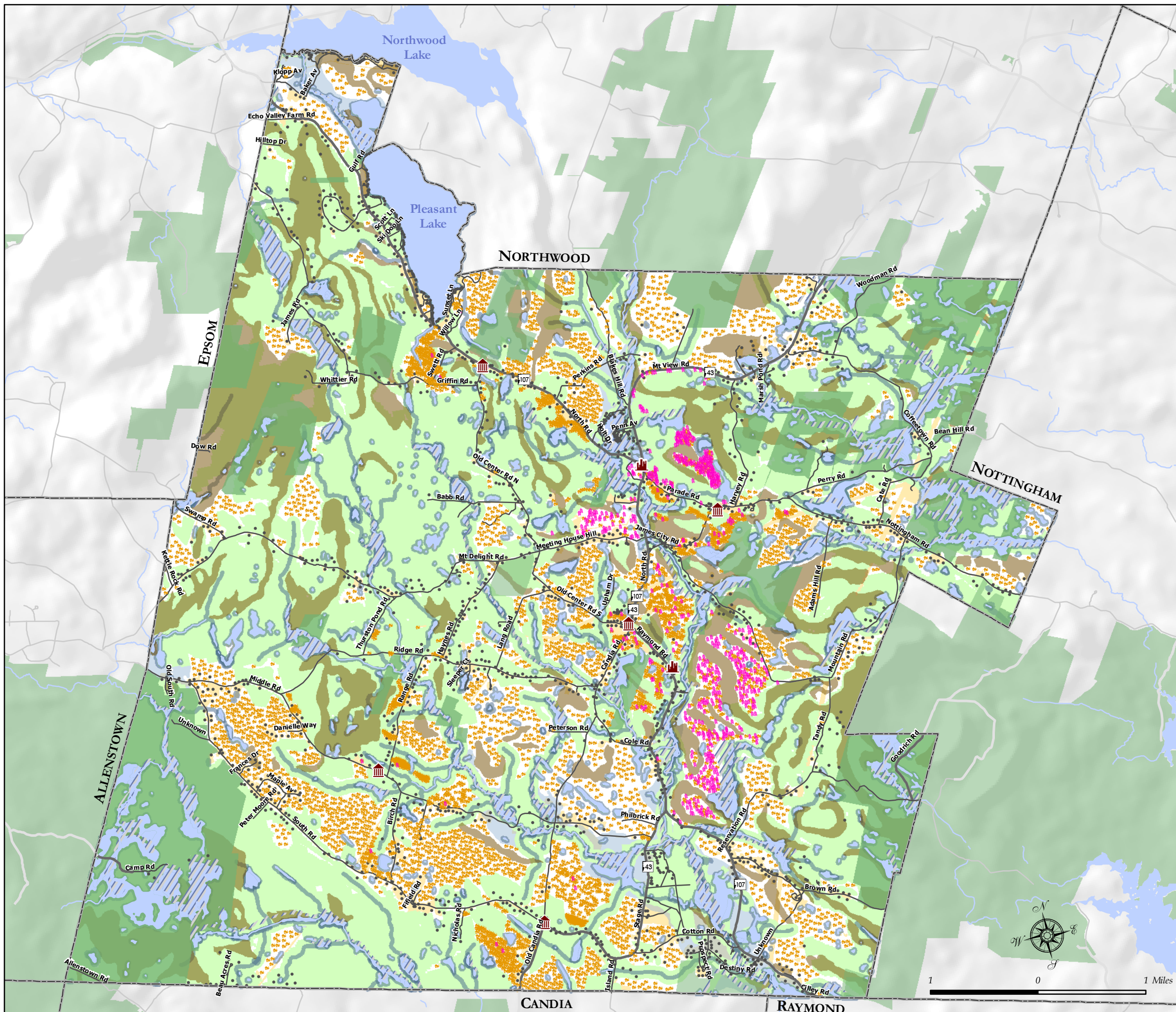
The individual municipalities represented on this map and the SNHPC make no representations or guaranties to the accuracy of the features and designations of this map.

Map Produced by
GIS Service SNHPC 2007.
Contact: gis@snhpc.org
Ph: (603) 669-4664

This map is one of a series of maps that were produced as part of a Town's Master Plan 2007 and for planning purposes only. It is not to be used for legal boundary determinations or for regulatory purposes.



Community Scenario Buildout TOWN OF DEERFIELD



- Town Boundaries
- Built Land
- Rivers
- Lakes
- Community Centers
- Commercial
- Residential

- Road Classes**
- State Maintained Roads
 - Town, Local, and Private Roads

- Buildout Buildings**
- Non-Residential
 - Single Family Residential
 - Existing Buildings

- Constraint Layers**
- National Wetland Inventory
 - 100YearFloodplain
 - Conservation Land
 - Natural Services Network
 - Steep Slopes > 15%
 - Aquifers
 - Surface Water 100-ft Buffer

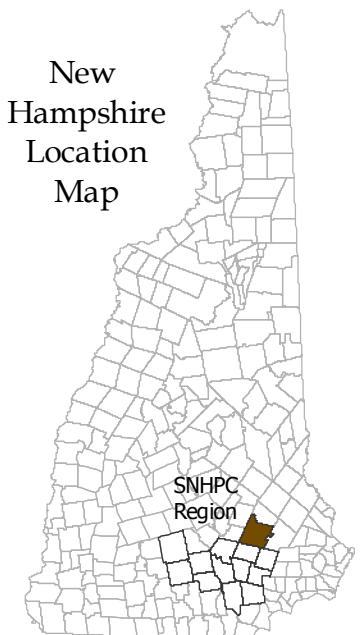
Data Sources:
 NH GRANIT Digital Data (1:24,000)
 NH Department of Transportation
 Town of Deerfield
 SNHPC

The individual municipalities represented on this map and the SNHPC make no representations or guaranties to the accuracy of the features and designations of this map.















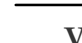
Map Produced by
 GIS Service SNHPC 2007.
 Contact: gis@snhpc.org
 Ph: (603) 669-4664

This map is one of a series of maps that were produced as part of a Town's Master Plan 2007 and for planning purposes only. It is not to be used for legal boundary determinations or for regulatory purposes.

New Hampshire
 Location
 Map



Land Use* TOWN OF DEERFIELD

-  Town Boundaries
-  Rivers and Streams
- Road Classes**
-  State Maintained Roads
-  Town, Local, and Private Roads
- LANDUSE**
-  Residential Single Family: 15314.39 acres, 45.88%
-  Residential Multi Family: 1151.22 acres, 3.45%
-  Commercial/Industrial: 422.87 acres, 1.27%
-  Cemetery: 0.12 acres, Less than 0.01%
-  Municipal: 724.78 acres, 2.17%
-  State: 3297.96 acres, All in Conservation
-  Agricultural: 133.7 acres, 0.4%
-  Transportation: 606.22 acres, 1.81%
-  Utilities: 276.23 acres, 0.83%
-  Open Water: 569.94 acres, 1.71%
-  Conservation Land: 5756 acres, 17.25%

Vacant Land: 10878.26 acres, 32.59%
Total Town Area 33,375.7 acres, 100%

* Land Use taken from Town Assessor Data

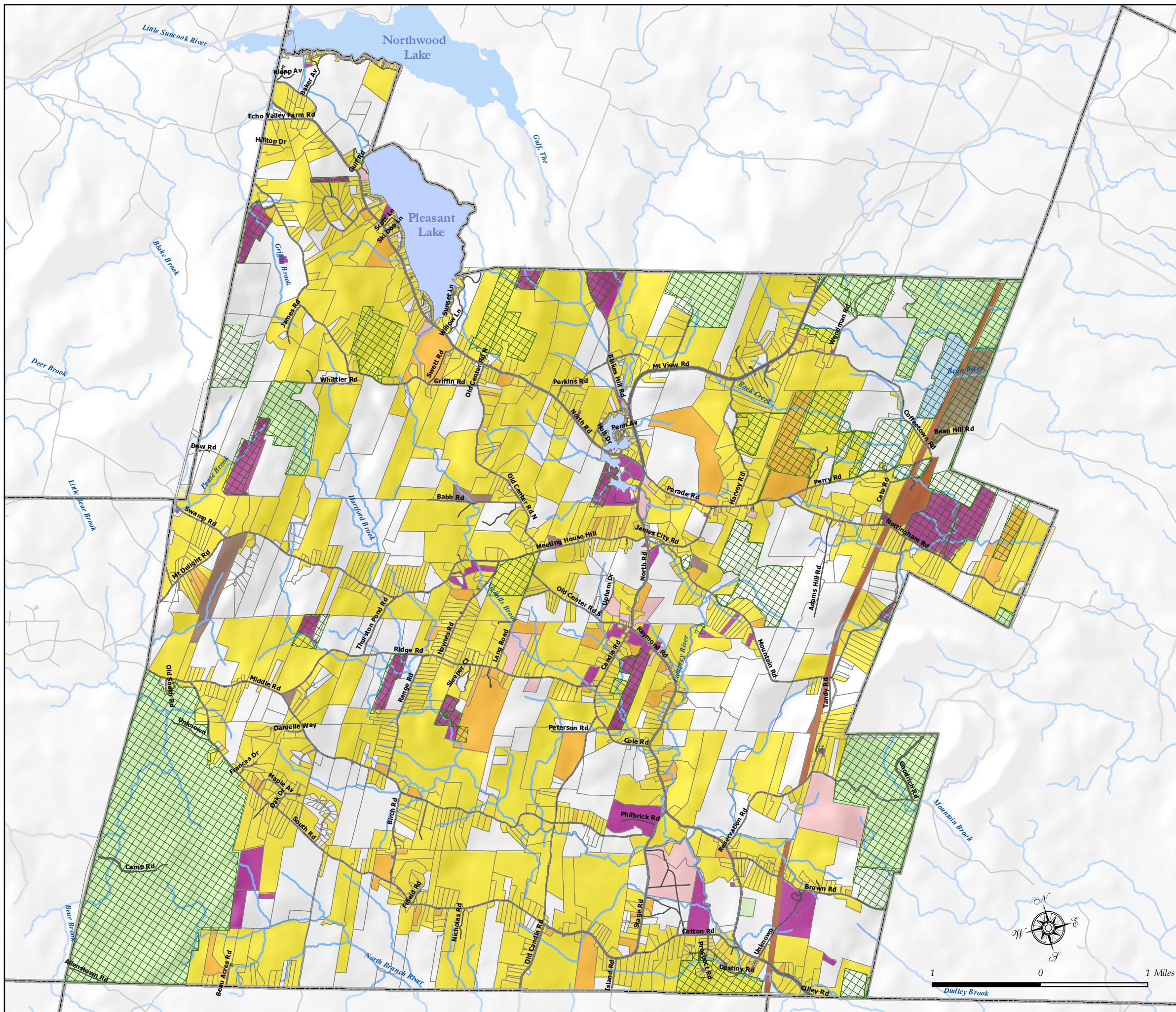
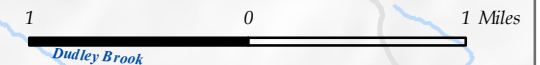
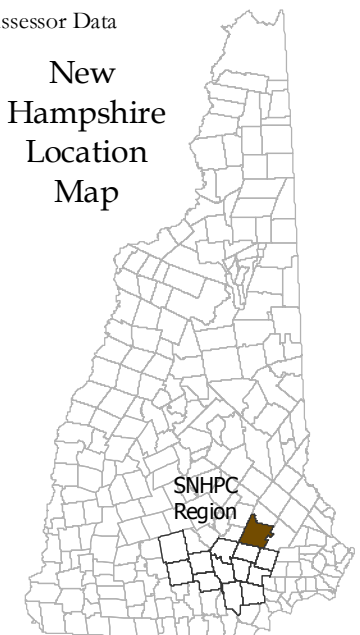
Data Sources:
 NH GRANIT Digital Data (1:24,000)
 NH Department of Transportation
 Town of Deerfield
 SNHPC

The individual municipalities represented on this map and the SNHPC make no representations or guaranties to the accuracy of the features and designations of this map.

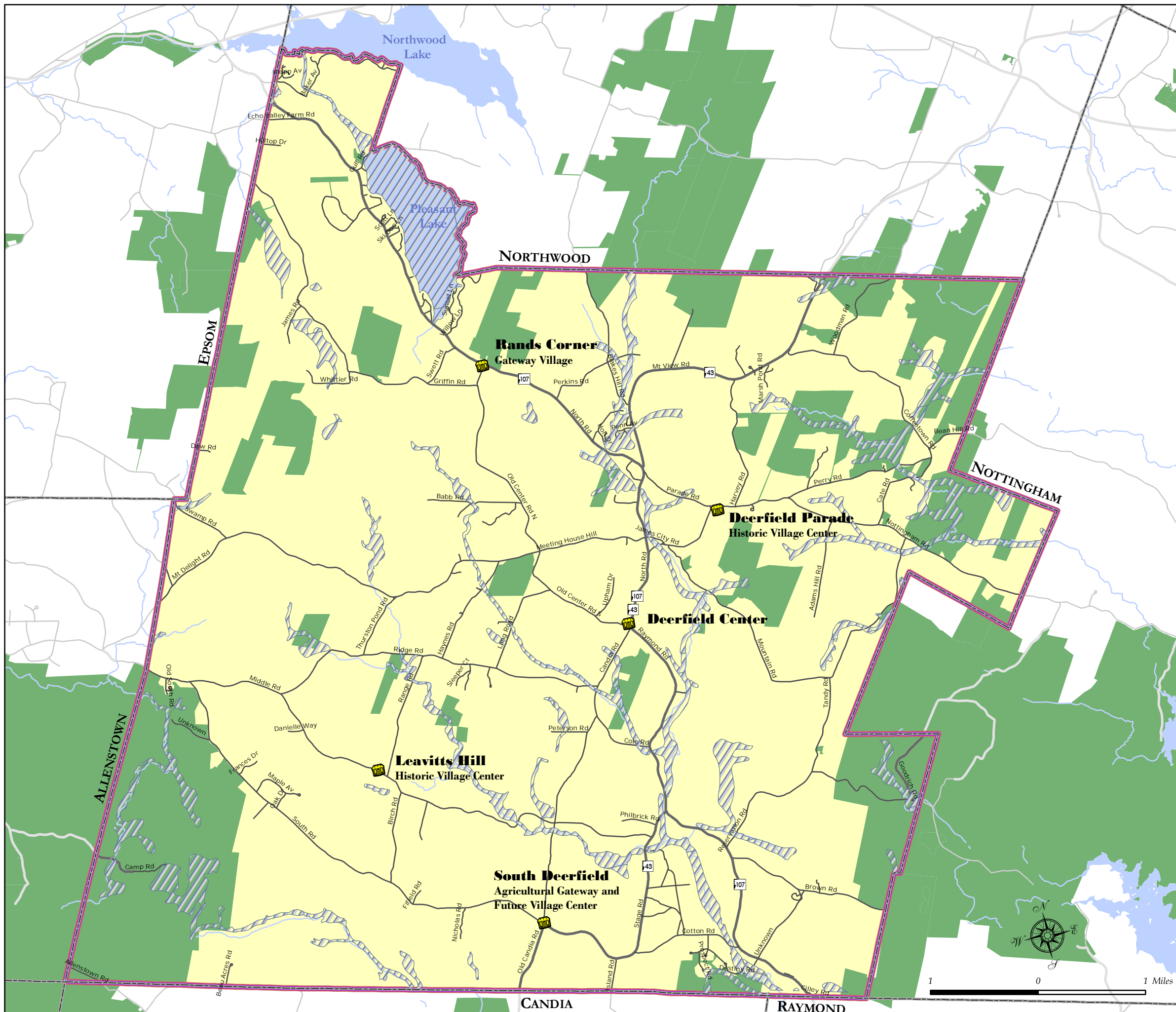
Map Produced by
 GIS Service SNHPC 2007.
 Contact: gis@snhpc.org
 Ph: (603) 669-4664

This map is one of a series of maps that were produced as part of a Town's Master Plan 2007 and for planning purposes only. It is not to be used for legal boundary determinations or for regulatory purposes.

New Hampshire
 Location
 Map



Future Land Use TOWN OF DEERFIELD



Old Village Centers

Town Boundaries

Conservation Land

Road Classes

State Maintained Roads

Town, Local, and Private Roads

Zoning

Agricultural/Residential

Zoning Overlays

100 Year Floodplain Overlay

Senior Housing Overlay

Commercial Overlay

Data Sources:
NH GRANIT Digital Data (1:24,000)
NH Department of Transportation
Town of Deerfield
SNHPC

The individual municipalities represented on this map and the SNHPC make no representations or guaranties to the accuracy of the features and designations of this map.

Map Produced by
GIS Service SNHPC 2007.
Contact: gis@snhpc.org
Ph: (603) 669-4664




This map is one of a series of maps that were produced as part of a Town's Master Plan 2007 and for planning purposes only. It is not to be used for legal boundary determinations or for regulatory purposes.











New Hampshire
Location
Map





Community Facilities TOWN OF DEERFIELD

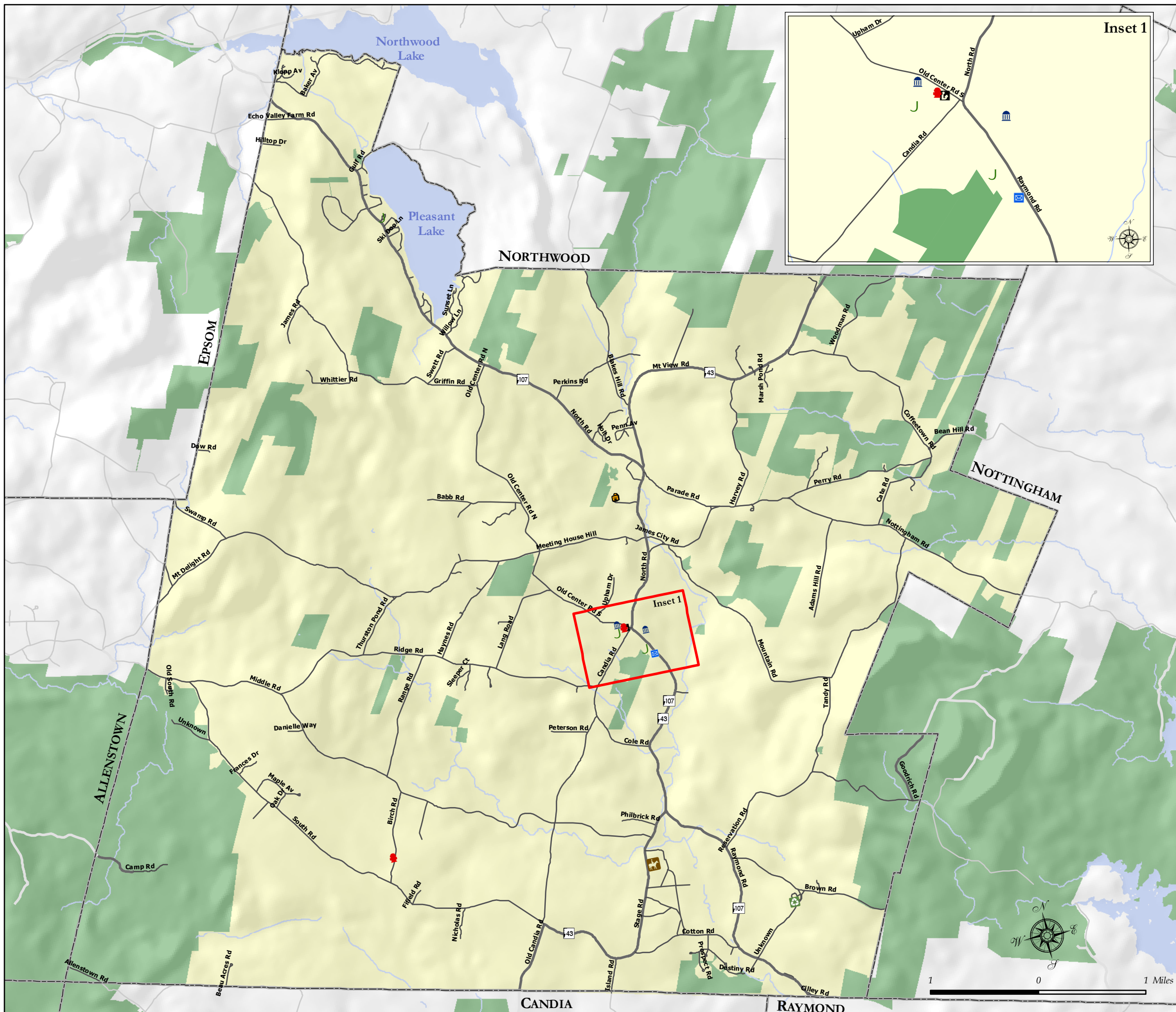
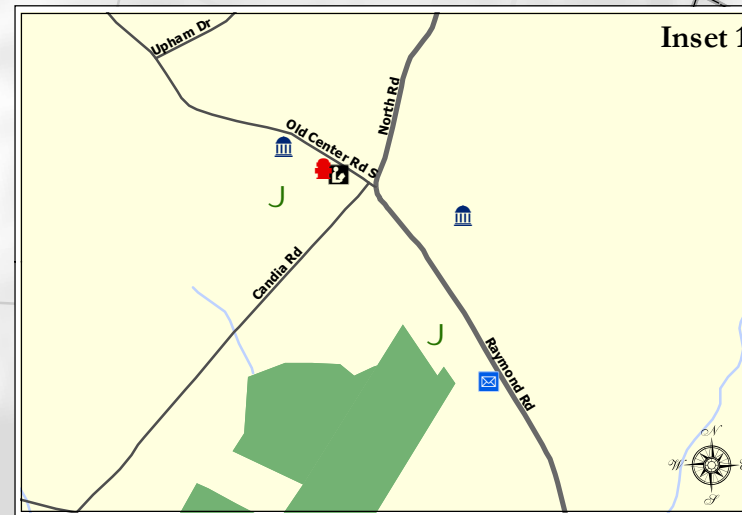
-  Town Boundaries
-  Deerfield
-  Conservation Land

Community Facility

-  Athletic/Recreation Facility
-  Deerfield Fair Grounds
-  Elementary School
-  Fire Station
-  Municipal Offices
-  Library
-  Post Office
-  Transfer Station

Road Classes

-  State Maintained Roads
-  Town, Local, and Private Roads



Data Sources:
 NH GRANIT Digital Data (1:24,000)
 NH Department of Transportation
 Town of Deerfield
 SNHPC

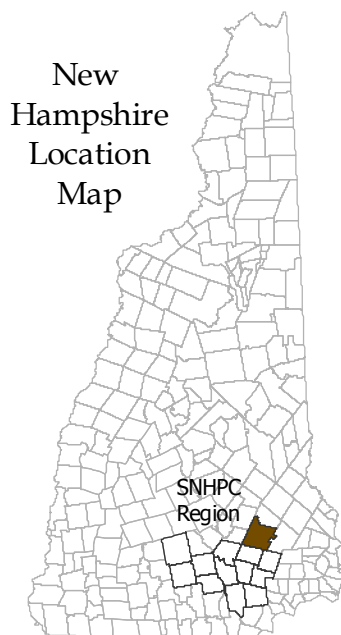
The individual municipalities represented on this map and the SNHPC make no representations or guarantees to the accuracy of the features and designations of this map.

Map Produced by
 GIS Service SNHPC 2007.
 Contact: gis@snhpc.org
 Ph: (603) 669-4664

This map is one of a series of maps that were produced as part of a Town's Master Plan 2007 and for planning purposes only. It is not to be used for legal boundary determinations or for regulatory purposes.

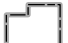



New Hampshire
 Location
 Map






Existing Traffic Volumes - 2005

TOWN OF DEERFIELD

-  Town Boundaries
-  Conservation Land
-  Rivers
-  Lakes

Road Classes

-  State Maintained Roads
-  Town Maintained Roads
-  Class VI and Private Roads

DEERFIELD FUTURE 2025 AADT

MAP KEY	LOCATION	2025 AADT
1	ROUTE 43 WEST OF ISLAND RD	3,800
2	NH 107 NORTH RD. @ EPSOM TL	2,800
3	ROUTE 107 SOUTH OF COTTON RD.	2,600
4	NH 107 WEST OF NH 43 MOUNTAIN VIEW RD.	2,600
5	ROUTE 43 @ NORTHWOOD TL	2,500
6	NH 107 NORTH OF GULF RD.	2,400
7	SOUTH RD. WEST OF OLD CANDIA RD.	1,500
8	MIDDLE RD. @ ALLENSTOWN TL	830
9	SOUTH RD. SOUTH OF MIDDLE RD.	640
10	PARADE RD. SOUTH OF NH 43 & 107	400
11	OLD CENTER RD. NORTH OF MOUNT DELIGHT RD.	390

Data Sources:
 NH GRANIT Digital Data (1:24,000)
 NH Department of Transportation
 Town of Deerfield
 SNHPC

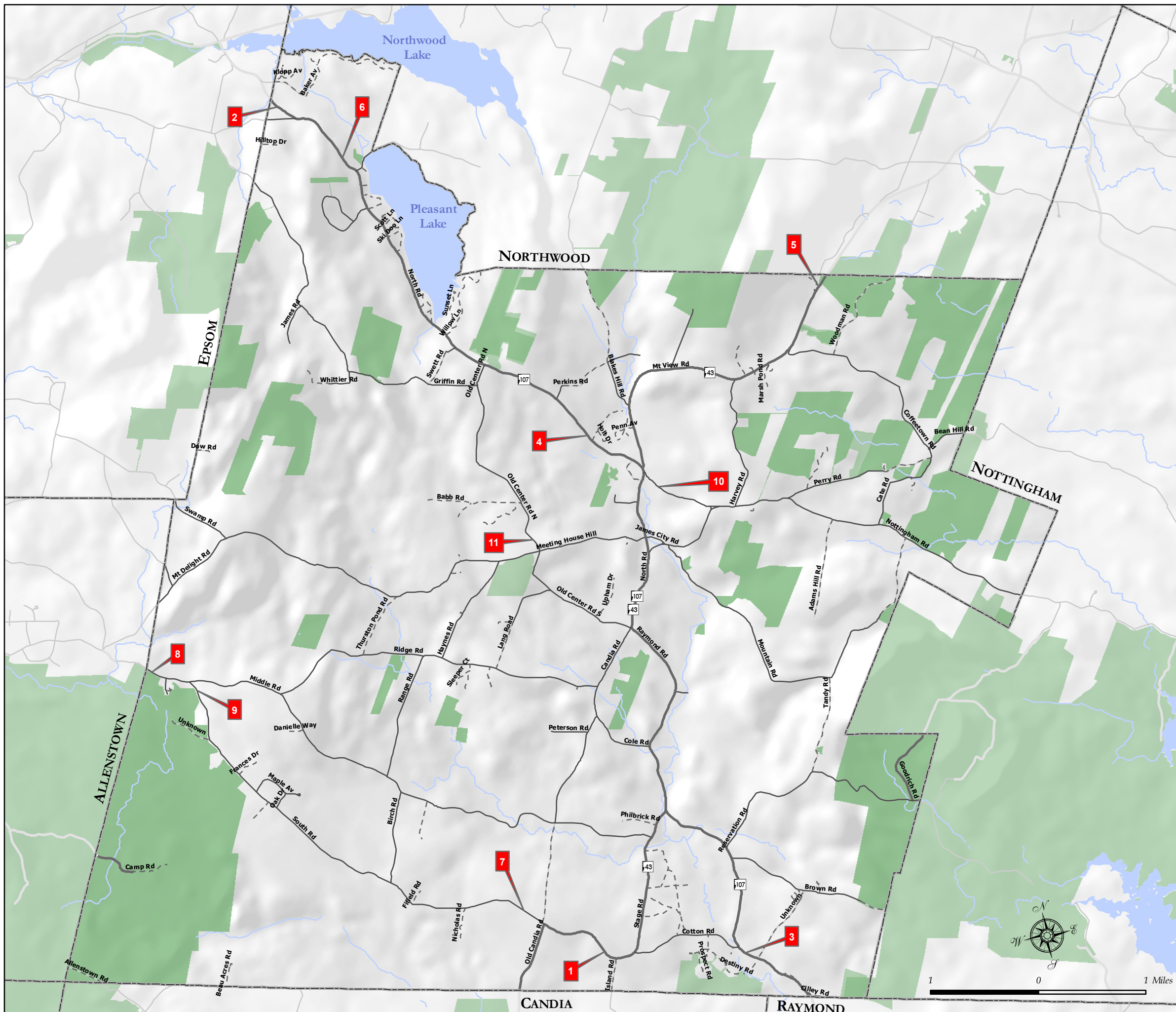
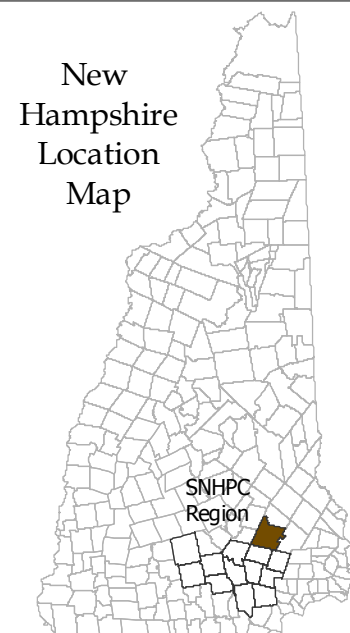
The individual municipalities represented on this map and the SNHPC make no representations or guaranties to the accuracy of the features and designations of this map.

Map Produced by
 GIS Service SNHPC 2007.
 Contact: gis@snhpc.org
 Ph: (603) 669-4664

This map is one of a series of maps that were produced as part of a Town's Master Plan 2007 and for planning purposes only. It is not to be used for legal boundary determinations or for regulatory purposes.










New Hampshire Location Map



Future Projected AADT - 2025

TOWN OF DEERFIELD

-  Town Boundaries
 -  Conservation Land
 -  Rivers
 -  Lakes
- Road Classes**
-  State Maintained Roads
 -  Town Maintained Roads
 -  Class VI and Private Roads

DEERFIELD FUTURE 2025 AADT

MAP KEY	LOCATION	2025 AADT
1	ROUTE 43 WEST OF ISLAND RD	5,200
2	NH 107 NORTH RD. @ EPSOM TL	3,700
3	ROUTE 107 SOUTH OF COTTON RD.	3,500
4	NH 107 WEST OF NH 43 MOUNTAIN VIEW RD.	3,100
5	ROUTE 43 @ NORTHWOOD TL	3,300
6	NH 107 NORTH OF GULF RD.	3,200
7	SOUTH RD. WEST OF OLD CANDIA RD.	2,300
8	MIDDLE RD. @ ALLENSTOWN TL	1,100
9	SOUTH RD. SOUTH OF MIDDLE RD.	800
10	PARADE RD. SOUTH OF NH 43 & 107	600
11	OLD CENTER RD. NORTH OF MOUNT DELIGHT RD.	600

Data Sources:
 NH GRANIT Digital Data (1:24,000)
 NH Department of Transportation
 Town of Deerfield
 SNHPC

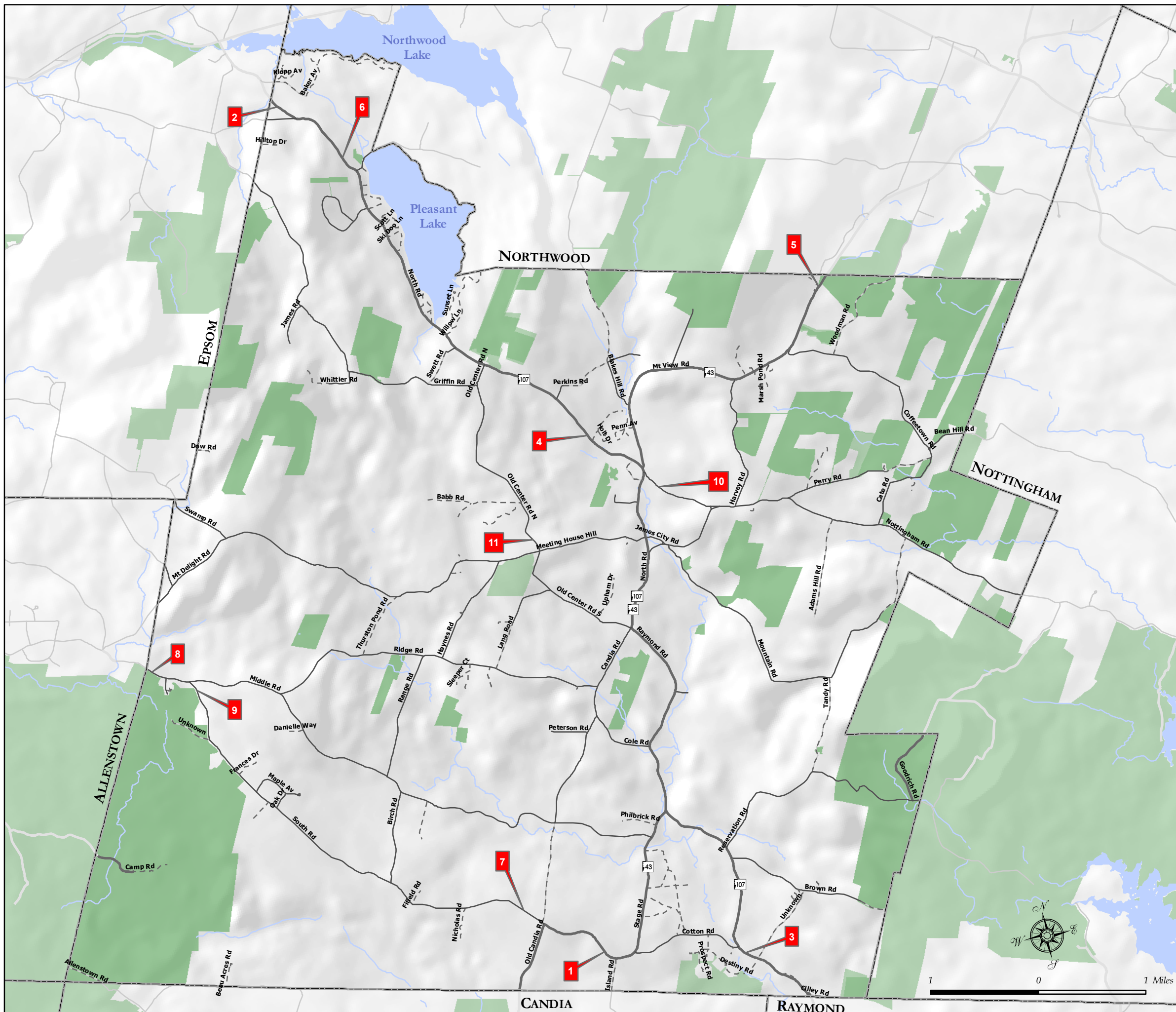
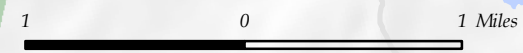
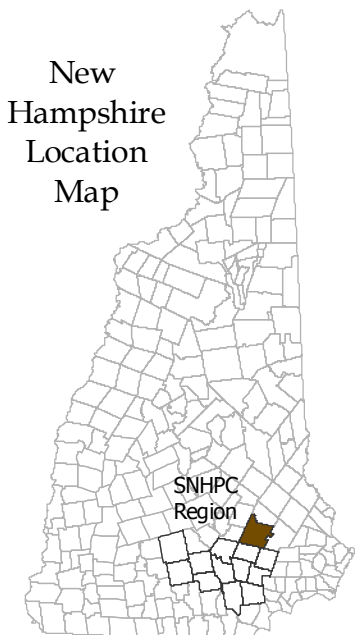
The individual municipalities represented on this map and the SNHPC make no representations or guaranties to the accuracy of the features and designations of this map.

Map Produced by
 GIS Service SNHPC 2007.
 Contact: gis@snhpc.org
 Ph: (603) 669-4664

This map is one of a series of maps that were produced as part of a Town's Master Plan 2007 and for planning purposes only. It is not to be used for legal boundary determinations or for regulatory purposes.



New Hampshire
 Location
 Map



Bicycle Routes And Multi-Use Trails TOWN OF DEERFIELD

-  Bicycle Routes
-  Multi Use Trails
-  Snowmobile Routes
-  Town Boundaries
-  Deerfield
-  Conservation Land
- Road Classes**
-  State Maintained Roads
-  Town, Local, and Private Roads



1 0 1 Miles

Data Sources:
NH GRANIT Digital Data (1:24,000)
NH Department of Transportation
Town of Deerfield
SNHPC

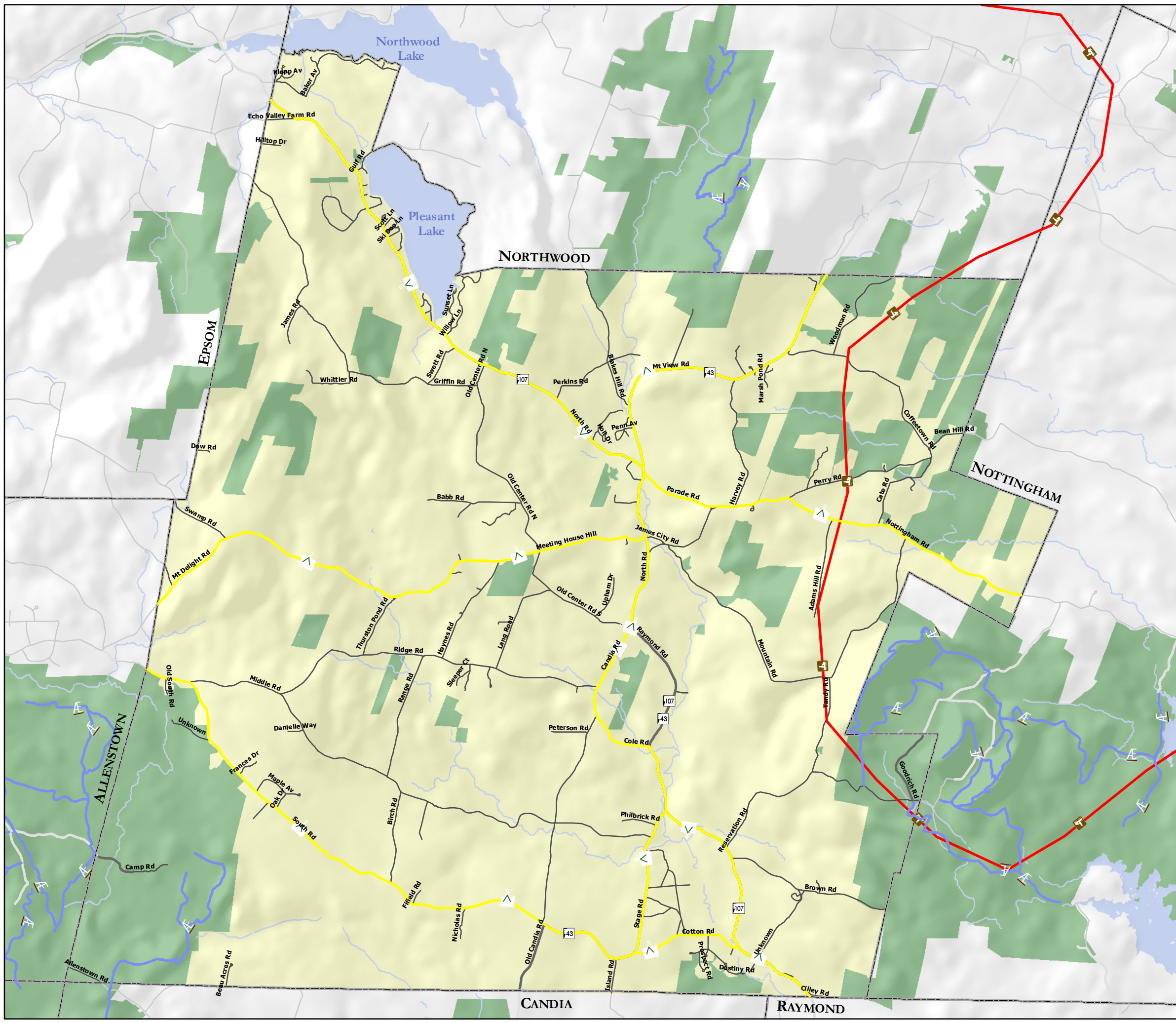
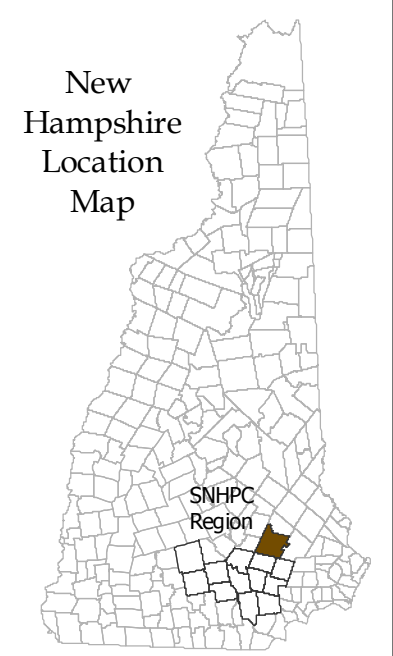
The individual municipalities represented on this map and the SNHPC make no representations or guaranties to the accuracy of the features and designations of this map.

Map Produced by
GIS Service SNHPC 2007.
Contact: gis@snhpc.org
Ph: (603) 669-4664

This map is one of a series of maps that were produced as part of a Town's Master Plan 2007 and for planning purposes only. It is not to be used for legal boundary determinations or for regulatory purposes.



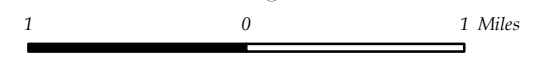
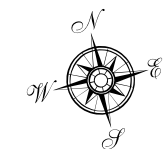
New Hampshire
Location
Map



Old Village Centers

TOWN OF DEERFIELD

-  Old Village Centers
-  Town Boundaries
-  Deerfield
-  Conservation Land
- Road Classes**
-  State Maintained Roads
-  Town, Local, and Private Roads



Data Sources:
 NH GRANIT Digital Data (1:24,000)
 NH Department of Transportation
 Town of Deerfield
 SNHPC

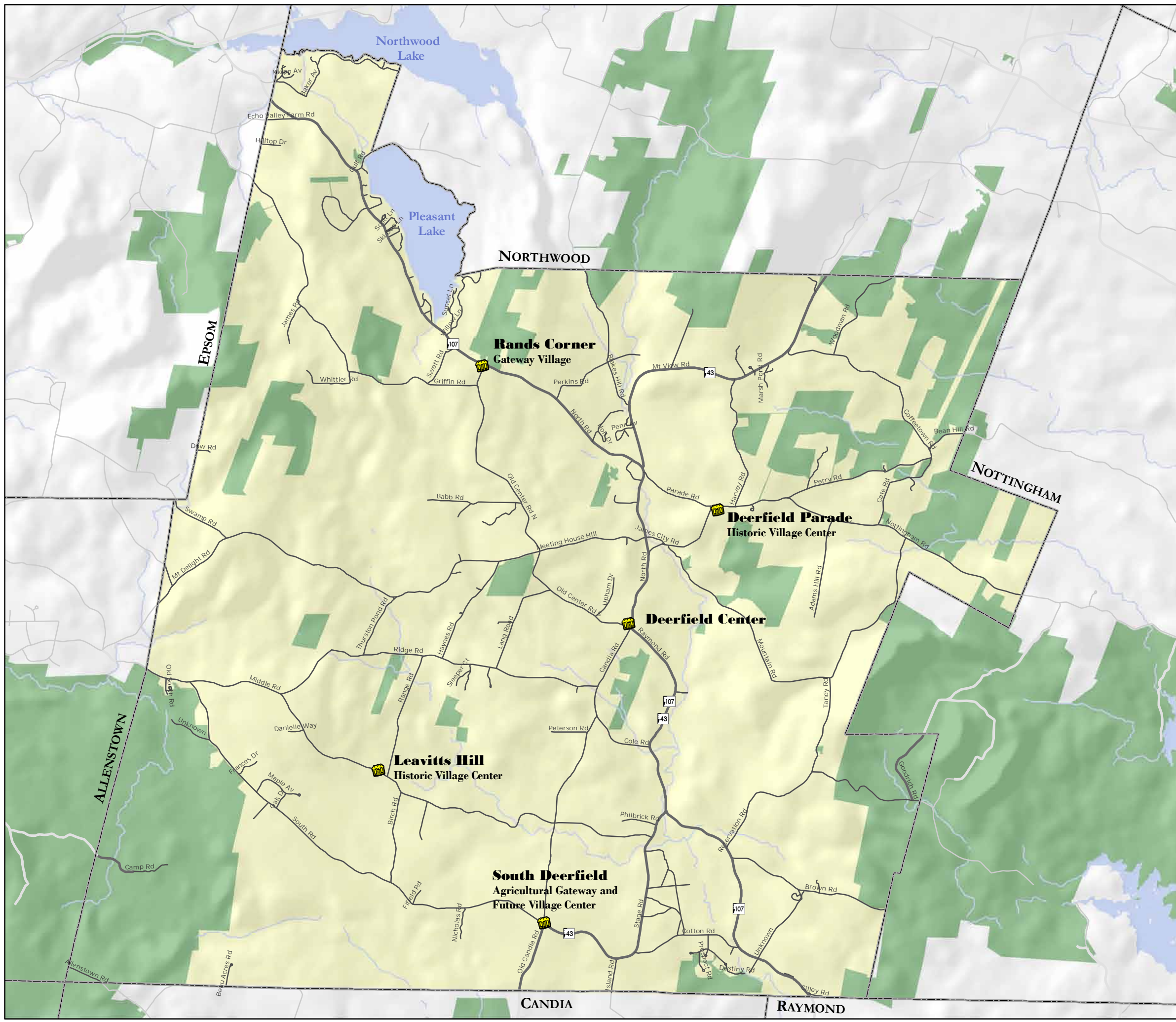
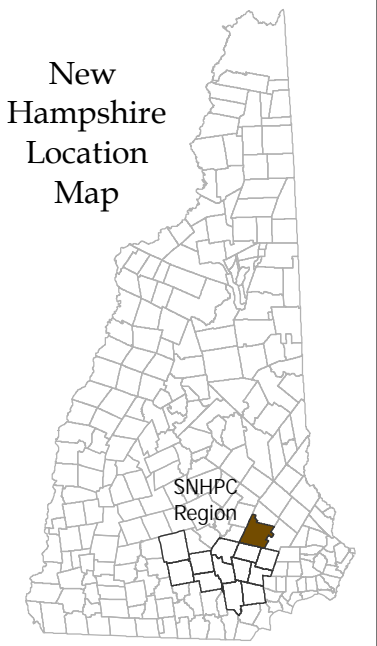
The individual municipalities represented on this map and the SNHPC make no representations or guaranties to the accuracy of the features and designations of this map.

Map Produced by
 GIS Service SNHPC 2007.
 Contact: gis@snhpc.org
 Ph: (603) 669-4664

This map is one of a series of maps that were produced as part of a Town's Master Plan 2007 and for planning purposes only. It is not to be used for legal boundary determinations or for regulatory purposes.



New Hampshire Location Map



Functional Highway Classification

TOWN OF DEERFIELD


 Town Boundaries

 Rivers

 Lakes

Roads

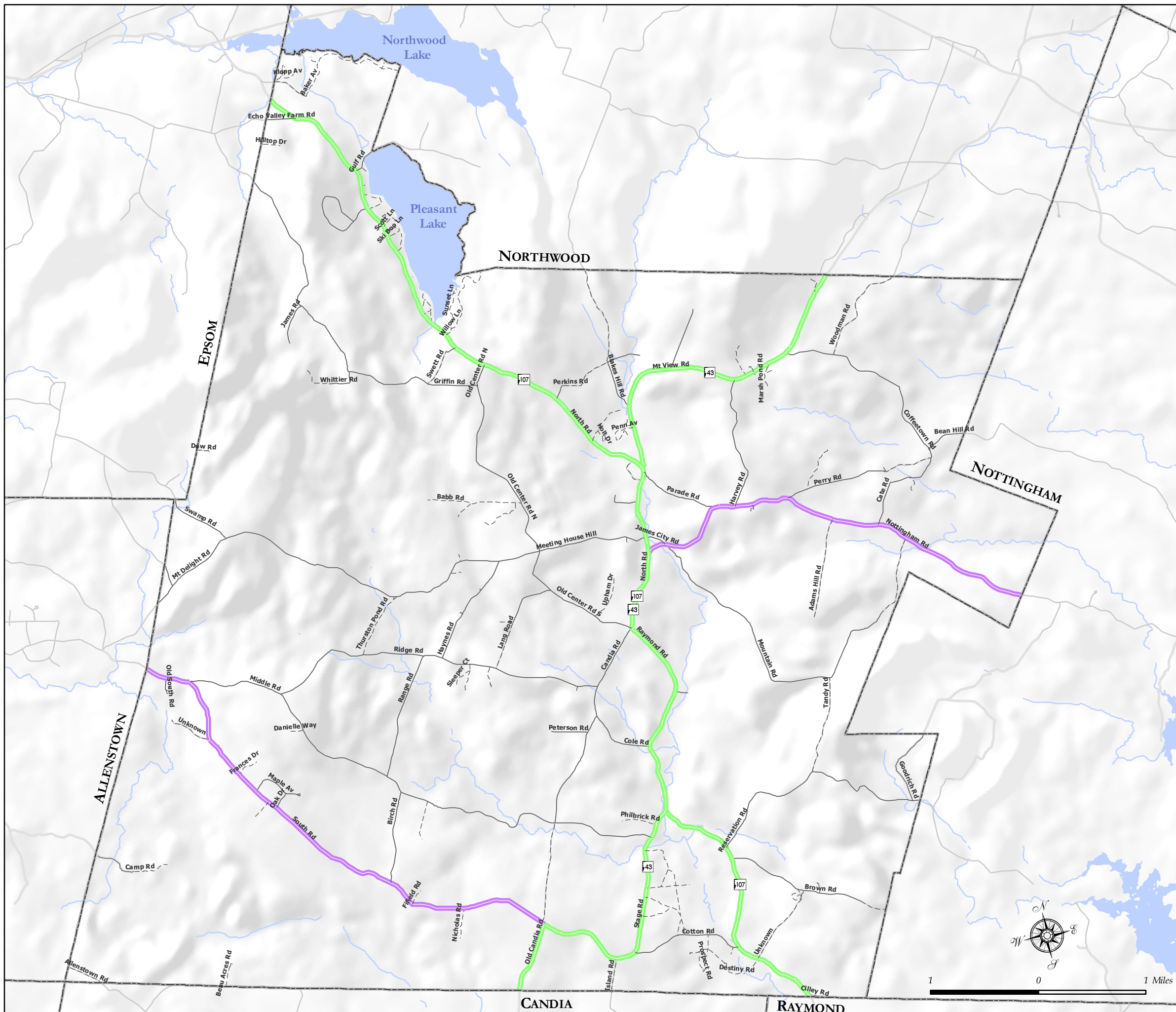
Functional Classification

 Major Collector

 Minor Collector

 Local Roads

 Class VI & Private Roads



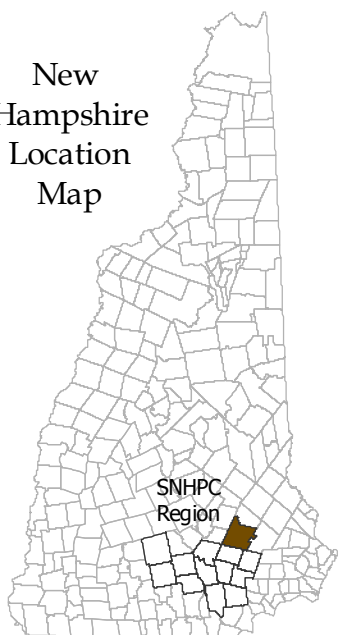
Data Sources:
NH GRANIT Digital Data (1:24,000)
NH Department of Transportation
Town of Deerfield
SNHPC

The individual municipalities represented on this map and the SNHPC make no representations or guaranties to the accuracy of the features and designations of this map.

Map Produced by
GIS Service SNHPC 2007.
Contact: gis@snhpc.org
Ph: (603) 669-4664

This map is one of a series of maps that were produced as part of a Town's Master Plan 2007 and for planning purposes only. It is not to be used for legal boundary determinations or for regulatory purposes.

New Hampshire
Location
Map



Administrative Highway Classification

TOWN OF DEERFIELD

 Town Boundaries

 Conservation Land

 Rivers

 Lakes

Roads

Administrative Classification

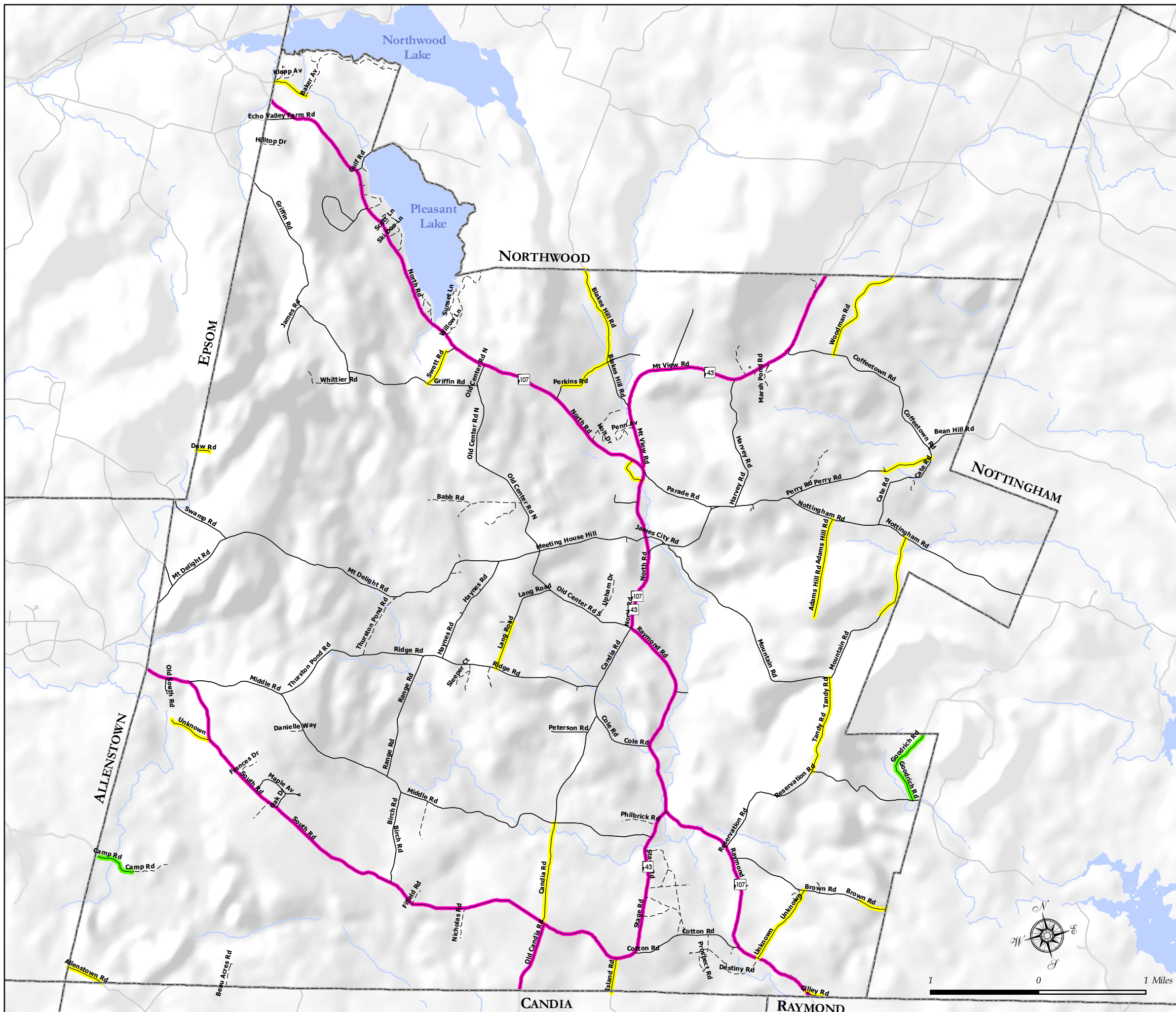
 Secondary State Highway - Class II

 State Maintained Recreation Road - Class III

 Town Roads - Class V

 Town Roads - Class VI

 Private Roads



Data Sources:
NH GRANIT Digital Data (1:24,000)
NH Department of Transportation
Town of Deerfield
SNHPC

The individual municipalities represented on this map and the SNHPC make no representations or guarantees to the accuracy of the features and designations of this map.

Map Produced by
GIS Service SNHPC 2007.
Contact: gis@snhpc.org
Ph: (603) 669-4664

This map is one of a series of maps that were produced as part of a Town's Master Plan 2007 and for planning purposes only. It is not to be used for legal boundary determinations or for regulatory purposes.



New Hampshire
Location
Map

